

LIGNE PURE



LIGNE
PURE



LIGNE PURE has always been synonymous with a product made of the highest quality materials combined with traditional artisanship and elegant design. When we first introduced handmade area rugs into our line, it opened an entirely new world of creativity, enabling us to work with a vast array of textures, techniques, and materials. It shows our continuous efforts to blend superior craftsmanship inspired by distinctive design concepts. These decorative rugs come from around the globe and are made of the finest materials to be found anywhere. We translate creativity and imagination into beauty that harmonizes with any choice of interior style. LIGNE PURE designs come in a variety of sizes as well as made-to-measure. They range from classical simplicity to trend-setting showpieces and blend refreshing new style ideas with quality and service at an affordable price. We keep our entire collection in stock and currently export to more than forty countries worldwide. Let us help you bring that final touch of perfection to your home.

LIGNE PURE staat voor een symbiose van artisaanaal vakmanschap, hoogwaardige materialen en eigentijdse ontwerpen. De ambachtelijk gemaakte tapijten openen een nieuwe wereld van creativiteit, gebruikmakende van een waaier aan texturen en diverse materialen. Onze collecties vertalen creativiteit en inspiratie naar tijdloze elegantie in harmonie met elk interieur. Hoewel LIGNE PURE tapijten in meerdere standaardafmetingen verkrijgbaar zijn, is maatwerk ook mogelijk. De ontwerpen zijn eenvoudig, hedendaags en exclusief, kortom design aan betaalbare prijs. We leveren de volledige collectie uit voorraad en exporteren naar meer dan 40 landen. Ligne Pure levert de final touch in uw interieur.

LIGNE PURE steht für Beste Qualität in Verbindung mit traditioneller Kunst, elegantem Design und einem einzigartigen Service. Die neu eingeführte Marke LIGNE PURE ist eine Kollektion aus handgefertigten Teppichen. Durch neue Techniken und den Einsatz edler Materialien öffnen sich neue Gestaltungsmöglichkeiten mit einem hohen Maß an Kreativität. Unser Ziel ist es durch kontinuierliche Bemühungen, bestes handwerkliches Können und mit einem hohen Maß an Inspiration unverwechselbarer Designkonzepte miteinander zu verbinden. Diese dekorativen Teppiche kommen aus aller Welt und werden aus den feinsten und hochwertigsten Materialkomponenten gefertigt. Wir übersetzen Kreativität und Fantasie in Schönheit, die im Einklang zum Stil der Inneneinrichtung steht. LIGNE PURE Designs sind sowohl in einer Vielzahl von Größen als auch in individuellen Sondergrößen als Maßanfertigung erhältlich. Eine Auswahl von klassischen, schlichten und modernen Dessins lassen keine Kundenwünsche offen. Neue Stilrichtungen und erfrischende Ideen ziehen ein hohes Maß an Aufmerksamkeit an. Eine hervorragende Preis-Leistung in Verbindung mit einem einzigartigen Service runden die Kollektion ab. Die LIGNE PURE Kollektion wird als Lagerprogramm geführt. Derzeit exportieren wir unsere Produkte in mehr als 40 Länder weltweit. Verschönern auch Sie Ihr Heim mit unseren exklusiven Teppichen.

LIGNE PURE a toujours été synonyme de matériaux de qualité supérieure combinée à l'artisanat traditionnel et le design élégant. En découvrant le monde du tapis fait main dans notre ligne, un monde de créativité s'est ouvert, ce qui nous permet de travailler avec une vaste gamme de textures, techniques et matériaux. Ceci manifeste nos efforts pour mélanger notre connaissance qui est inspirée par les concepts de design distinctif. Ces tapis décoratifs viennent du monde entier et sont fabriqués avec les plus beaux matériaux qu'on trouve partout. La créativité et l'imagination sont traduites en beauté qui s'harmonise avec le choix du style intérieur. Les tapis LIGNE PURE sont faits dans différentes tailles, ainsi que sur mesure. Les dessins sont multiples allant des modèles classiques aux dessins mondains tout en introduisant un nouveau style de qualité et un service à prix abordable. Toute la collection est en stock et momentanément nous exportons vers plus de 40 pays. LIGNE PURE vous apporte la touche finale de perfection pour votre intérieur!



HANDMADE

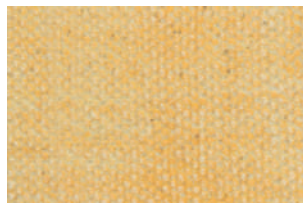
- E > All our products are handmade. This implies that the human touch makes each item a unique piece as a result of being handcrafted. Therefore the slight differences and deviations you may notice should be regarded as a benefit from this work and not as imperfections.
- N > Al onze producten werden handvervaardigd. Dit maakt elk stuk uniek. Lichte maatafwijkingen en kleurverschillen dragen bij tot de eigenheid van het handwerk en zorgen voor een absolute meerwaarde.
- D > Alle unsere Produkte sind handgefertigt. Das bedeutet daß jedes Stück ein Unikat ist. Leichte Farbabweichungen sind möglich und deshalb kein Fehler.
- F > Tous nos produits sont faits à la main, c'est à dire, l'homme crée par ses propres mains une pièce unique. Pour cette raison, on peut rencontrer des différences et écarts minimales en couleurs et dimensions. Nous considérons cette différence comme un avantage et pas comme un défaut.



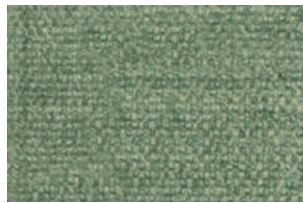
- E > Ligne Pure only works with suppliers that have a 100% child-labor free environment.
- N > Ligne Pure werkt enkel met leveranciers die geen kinderarbeid toelaten.
- D > Ligne Pure arbeitet ausschliesslich mit Lieferanten die zu 100% den Einsatz von Kinderarbeit ausschliessen.
- F > Ligne Pure coopère uniquement avec des fournisseurs utilisant un environnement sans travail des enfants.



SLATE



INDIAN YELLOW



JADE



INDIGO



RUBY









MELLOW 733.003.900 - 734.001.400 - 731.001.800 **NEW**

- Q cotton - handwoven
katoen - handgeweven
Baumwolle - handgewebt
coton - tissé à la main
- ↑ flatweave

E > Colors and look vary due to painting and stone washing.
N > Kleuren en uiterlijk variëren door het verven en de stone washing.
D > Farben und Aussehen variieren durch färben und bleichen.
F > Les couleurs et l'apparence varient en fonction de la peinture et du délavage à la pierre.



MELLOW (CUSHION) 732.002.400 + 732.002.800 (POUFS S) 733.003.900 + 733.003.800 (M) 731.001.800 (L) 734.001.400 **NEW**



MELLOW (CUSHIONS) 732.002.700 + 732.001.970 (POUFS S) 733.003.900 (M) 731.001.900 **NEW**



MELLOW 732.002.700 **NEW**



MELLOW 732.001.970 **NEW**

- Q** cotton - handwoven
katoen - handgeweven
Baumwolle - handgewebt
coton - tissé à la main
- ↑** flatweave
- ⚖** approx. 900gr/st.



MELLOW 732.002.500 **NEW**



MELLOW 732.001.950 **NEW**

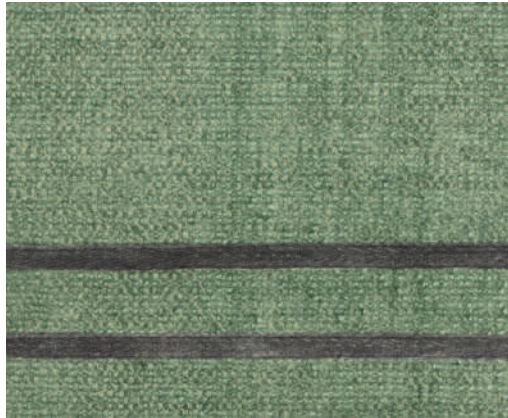
- Q** cotton - handwoven
- katoen - handgeweven
- Baumwolle - handgewebt
- coton - tissé à la main
- ↑** flatweave
- ⚖** approx. 900gr/st.



MELLOW (CUSHIONS) 732.002.500 + 732.001.950 (POUFS S) 733.003.900 + 733.002.500 (M) 731.001.900 + 731.001.500 **NEW**



MELLOW (CUSHIONS) 732.002.400 + 732.001.940 (POUFS S) 733.001.940 (M) 731.001.400 **NEW**



MELLOW 732.002.400 **NEW**



MELLOW 732.001.940 **NEW**

- Q** cotton - handwoven
- katoen - handgeweven
- Baumwolle - handgewebt
- coton - tissé à la main
- ↑** flatweave
- ⚖** approx. 900gr/st.



MELLOW 732.002.800 **NEW**



MELLOW 732.001.980 **NEW**

- Q** cotton - handwoven
katoen - handgeweven
Baumwolle - handgewebt
coton - tissé à la main
- ↑** flatweave
- ⚖** approx. 900gr/st.



MELLOW (CUSHIONS) 732.002.800 + 732.001.980 (POUFS S) 733.003.900 + 733.003.800 (M) 731.001.900 + 731.001.800 **NEW**



LUSH (PLAID) 730.001.100

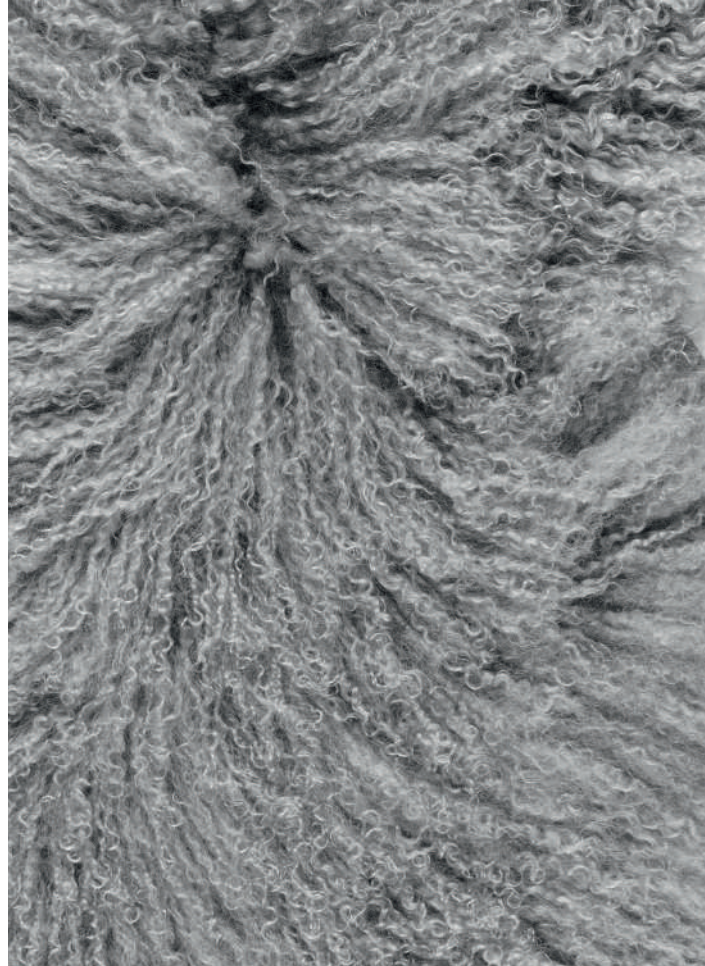


LUSH 730.001.100

Q Mongolian lambskin
Mongoolse lamshuid
Mongolisches Lammfell
Peau d'agneau mongole

↑ 100mm

⚖ approx. 450gr/st.



LUSH 730.001.900

Q Mongolian lambskin
Mongoolse lamshuid
Mongolisches Lammfell
Peau d'agneau mongole

↑ 100mm

⚖ approx. 450gr/st.



LUSH (CUSHION) 729.001.900 + (PLAID) 730.001.900



LUSH (CUSHION) 729.001.910 + (PLAID) 730.001.910



LUSH 730.001.910

Q Mongolian lambskin
Mongoolse lamshuid
Mongolisches Lammfell
Peau d'agneau mongole

↑ 100mm

⚖ approx. 450gr/st.



OAT 244.001.900 **NEW**

- Q Wool/bamboo silk - handwoven
Wol/bamboe zijde - handgeweven
Wolle/Bambus Seide - handgewebt
Laine/soie de bambou - tissé à la main
- ⌆ zero pile
- 👤 approx. 3500gr/m²



OAT 244.001.900 **NEW**





OAT 244.001.110 **NEW**

Q Wool/bamboo silk - handwoven
Wol/bamboe zijde - handgeweven
Wolle/Bambus Seide - handgewebt
Laine/soie de bambou - tissé à la main

↑ zero pile

⚖ approx. 3500gr/m²



OAT 244.001.500 **NEW**

- Q Wool/bamboo silk - handwoven
Wol/bamboe zijde - handgeweven
Wolle/Bambus Seide - handgewebt
Laine/soie de bambou - tissé à la main
- ↑ zero pile
- ⚖ approx. 3500gr/m²



OAT 244.001.500 **NEW**



OAT 244.001.910 **NEW**



OAT 244.001.910 **NEW**

Q Wool/bamboo silk - handwoven
Wol/bamboe zijde - handgeweven
Wolle/Bambus Seide - handgewebt
Laine/soie de bambou - tissé à la main

↑ zero pile

⚖ approx. 3500gr/m²



DOTTED 246.001.900 **NEW**

Q Wool/viscose - handtufted
Wol/viscose - handgetuft
Wolle/Viskose - handgetuftet
Laine/viscose - tufté à la main

⌈ high low

⚖ approx. 5000gr/m²



DOTTED 246.001.900 **NEW**



DOTTED 246.001.990 **NEW**



DOTTED 246.001.990 **NEW**

Q Wool/viscose - handtufted
Wol/viscose - handgetuft
Wolle/Viskose - handgetuftet
Laine/viscose - tufté à la main

⌆ high low

⚖ approx. 5000gr/m²



PRIME 245.001.100 **NEW**

Q Wool/viscose -berber handknotted
Wol/viscose - berber handgeknoopt
Wolle/Viskose - Berber handgeknüpft
Laine/viscose - berber noué à la main

↑ 20mm

⚖ approx. 4500gr/m²





TORRENT 247.001.500 **NEW**



TORRENT 247.001.500 **NEW**

Q Wool/tencel - handwoven
Wol/tencel - handgeweven
Wolle/tencel - Handgewebt
Laine/tencel - tissé à la main

↑ 3mm

⚖ approx. 3000gr/m²

E > Fringes of ± 4 cm on the length of the carpet.
N > Franjes van ± 4 cm bij de lengte van het tapijt.
D > Mit ± 4 cm langen Fransen auf der langen Seite.
F > Franges de ± 4 cm sur la longueur du tapis.



RHYTHM 248.001.900 **NEW**

Q Wool/viscose - handwoven
Wol/viscose - handgeweven
Wolle/Viskose - handgewebt
Laine/viscose - tissé à la main

↑ flatweave

⚖ approx. 2700gr/m²





RHYTHM 248.001.100 **NEW**



RHYTHM 248.001.100 **NEW**

Q Wool/viscose - handwoven
Wol/viscose - handgeweven
Wolle/Viskose - Handgewebt
Laine/viscose - tissé à la main

↑ flatweave

⚖ approx. 2700gr/m²



RHYTHM 248.001.101 **NEW**

Q Wool/viscose - handwoven
Wol/viscose - handgeweven
Wolle/Viskose - handgewebt
Laine/viscose - tissé à la main

↑ flatweave

⚖ approx. 2700gr/m²





GRADE 241.001.900



GRADE 241.001.900

- Q wool/viscose - handwoven
wol/viscose -handgeweven
Wolle/Viskose - handgewebt
laine/viscose - tissée à la main
- ⌞ flatweave
- 👤 approx. 3500gr/m²

- E > Fringes of ± 2,5 cm on the length of the carpet.
- N > Franjes van ± 2,5 cm bij de lengte van het tapijt.
- D > Mit ± 2,5 cm langen Fransen auf der langen Seite.
- F > Franges de ± 2,5 cm sur la longueur du tapis.



SWITCH 237.001.500

Q wool - handknotted
wol - handgeknoopt
Wolle - handgeknüpft
laine - noué à la main

↑ structured

⚖ approx. 2100gr/m²



SWITCH 237.001.500



SWITCH 237.001.900



SWITCH 237.001.900

Q wool - handknotted
wol - handgeknoopt
Wolle - handgeknüpft
laine - noué à la main

↑ structured

⚖ approx. 2100gr/m²



MARVEL 240.001.609

Q wool - handwoven
wol - handgeweven
Wolle - handgewebt
laine - tissé à la main

⌞ flatweave

⚖ approx. 2000gr/m²





MARVEL 240.001.707



MARVEL 240.001.707

Q wool - handwoven
wol - handgeweven
Wolle - handgewebt
laine - tissé à la main

↑ flatweave

⚖ approx. 2000gr/m²



MARVEL 240.001.909



MARVEL 240.001.505

- Q wool - handwoven
- wol - handgeweven
- Wolle - handgewebt
- laine - tissé à la main
- ↑ flatweave
- ⬆ approx. 2000gr/m²



MARVEL (L) 240.001.909 + (R) 240.001.505 + MELLOW (CUSHION) 732.001.500 + (POUFS S) 733.002.500



MARVEL 240.001.919 **NEW**



MARVEL 240.001.919 **NEW**

Q wool - handwoven
wol - handgeweven
Wolle - handgewebt
laine - tissé à la main

↑ flatweave

⚖ approx. 2000gr/m²



SOLID 243.001.900

- Q wool - handwoven
wol - handgeweven
Wolle - handgewebt
laine - tissé à la main
- ↑ flatweave
- ⚖ approx. 4000gr/m²



SOLID 243.001.900



SHIFT 242.001.100

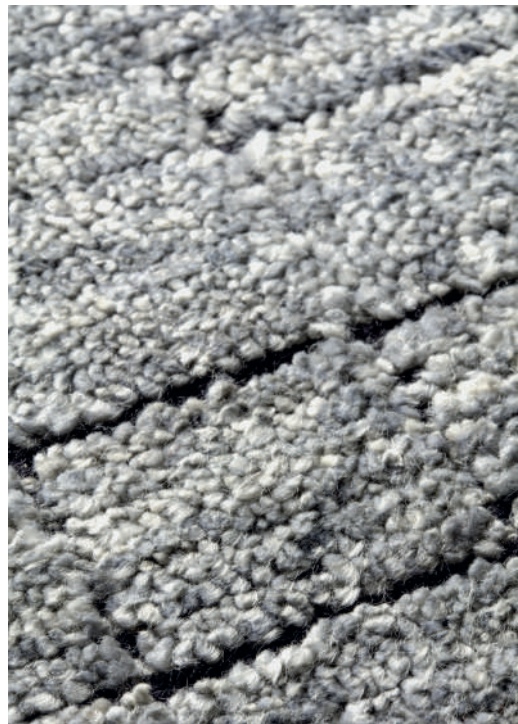


SHIFT 242.001.100

- Q wool - handwoven
wol - handgeweven
Wolle - handgewebt
laine - tissé à la main
- ↑ flatweave
- ⚖ approx. 2000gr/m²



MESH 239.001.100



MESH 239.001.900

- Q Wool/bamboo silk - handwoven
- Wol/bamboe zijde - handgeweven
- Wolle/Bambus Seide - handgewebt
- Laine/soie de bambou - tissé à la main
- ↑ 4mm
- ⚖ approx. 3250gr/m²



MESH 239.001.900



ERODE 238.001.500



ERODE 238.001.500

- Q Wool/bamboo silk - handtufted
- Wol/bamboe zijde - handgetuft
- Wolle/Bambus Seide - handgetuftet
- Laine/soie de bambou - tufté à la main
- ⌆ high low
- 👤 approx. 3800gr/m²



ERODE 238.001.600

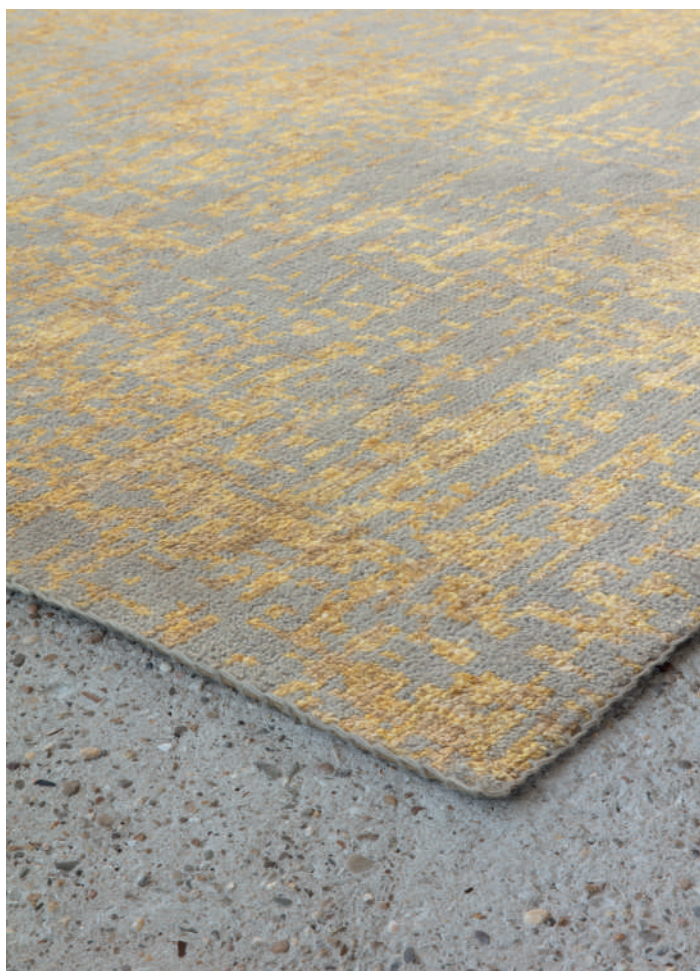
- Q Wool/bamboo silk - handtufted
- Wol/bamboe zijde - handgetuft
- Wolle/Bambus Seide - handgetuftet
- Laine/soie de bambou - tufté à la main
- ↑ high low
- ⚖ approx. 3800gr/m²



ERODE 238.001.600



REFLECT 234.001.700



REFLECT 234.001.700

Q wool/viscose - handknotted
wol/viscose - handgeknoopt
Wolle/Viskose - handgeknüpft
laine/viscose - noué à la main

⌈ zero pile

⚖ approx. 2900gr/m²



REFLECT 234.001.900

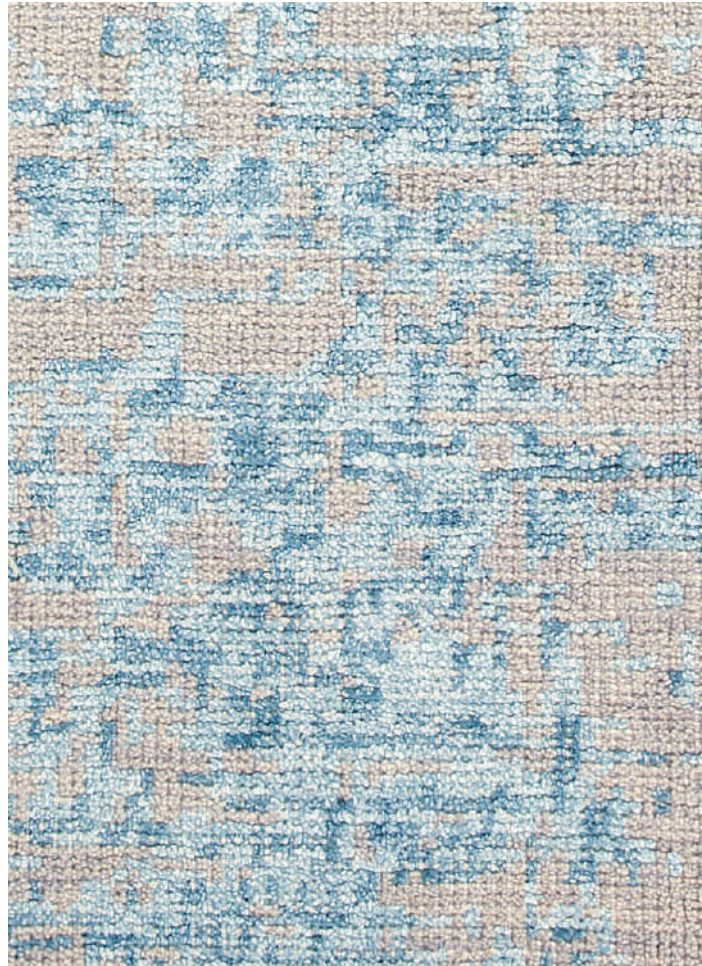
- Q wool/viscose - handknotted
wol/viscose - handgeknoopt
Wolle/Viskose - handgeknüpft
laine/viscose - noué à la main
- ↑ zero pile
- ⚖ approx. 2900gr/m²



REFLECT 234.001.900



REFLECT 234.001.500

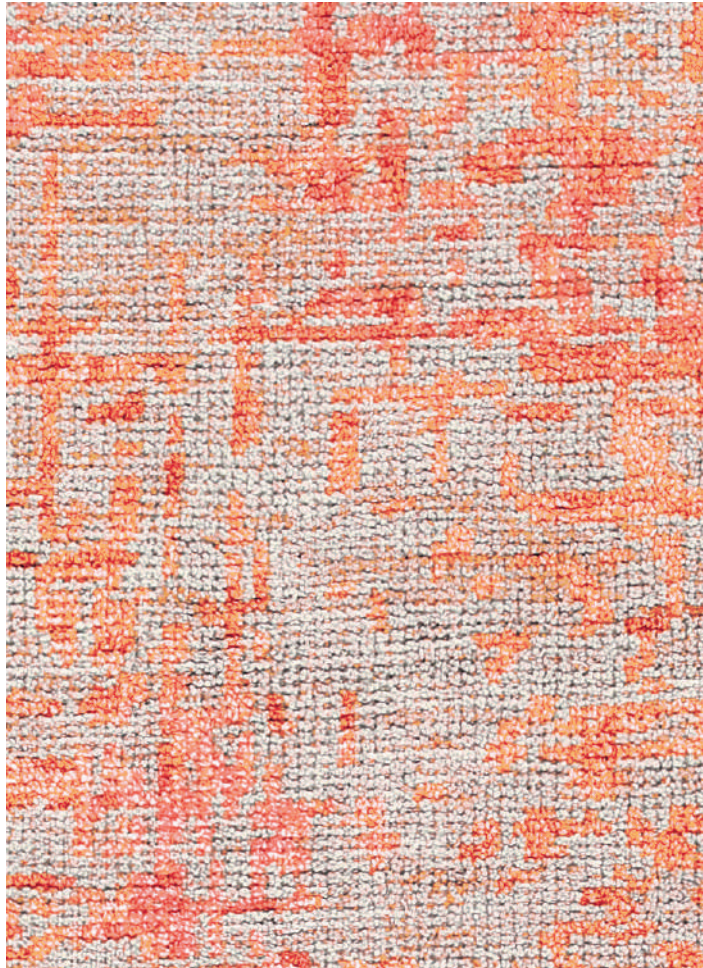


REFLECT 234.001.500

Q wool/viscose - handknotted
wol/viscose - handgeknoopt
Wolle/Viskose - handgeknüpft
laine/viscose - noué à la main

⌆ zero pile

⚖ approx. 2900gr/m²



REFLECT 234.001.200

Q wool/viscose - handknotted
wol/viscose - handgeknoopt
Wolle/Viskose - handgeknüpft
laine/viscose - noué à la main

⌈ zero pile

⚖ approx. 2900gr/m²



REFLECT 234.001.200



ENJOY 216.001.200 + (CUSHION) 700.001.200



RISE 216.002.500

Q wool - handwoven
wol - handgeweven
Wolle - handgewebt
laine - tissé à la main

T flatweave

A approx. 1400gr/m²



ENJOY 216.001.200 + 700.001.200



ENJOY 216.001.600

- Q wool - handwoven
- wol - handgeweven
- Wolle - handgewebt
- laine - tissé à la main
- ⌆ flatweave
- ⚖ approx. 1400gr/m²



RISE 216.002.600



ENJOY (R) 216.001.600 + RISE (L) 216.002.600



ENJOY (L) 216.001.990 + (CUSHION) 700.001.990 + RISE (R) 216.002.300



ENJOY 216.001.990 + 700.001.990 + RISE 216.002.300

- Q wool - handwoven
wol - handgeweven
Wolle - handgewebt
laine - tissé à la main
- ↑ flatweave
- ⚖ approx. 1400gr/m²



SAND 219.001.100

- Q jute/cotton - handwoven
- jute/katoen - handgeweven
- Jute/Baumwolle - handgewebt
- jute/coton - tissé à la main
- ↑ flatweave
- ⚖ approx. 2500gr/m²





FEEL 223.001.900 + (PLAID) 704.001.900



FEEL 223.001.900 + (CUSHION) 703.001.900

- Q faux fur
imitatiebont
Kunstfell
fausse fourrure
- ↑ 30mm
- ⚖ approx. 2200gr/m²

E > Rug is not fire resistant.
N > Tapijt is niet vuurvast.
D > Teppich ist nicht feuerfest.
F > Tapis non traité anti-feu.



FEEL 211.001.600 + (CUSHION) 706.001.600

- Q faux fur
- imitatiebont
- Kunstfell
- fausse fourrure
- ↑ 20mm
- ⚖ approx. 1600gr/m²

- E > Rug is not fire resistant.
- N > Tapijt is niet vuurvast.
- D > Teppich ist nicht feuerfest.
- F > Tapis non traité anti-feu.

*Je est un autre
et vous aussi*



FEEL 211.001.600 + (PLAID) 705.001.600



FEEL 211.003.100 + (CUSHION) 709.001.100



FEEL 211.003.100

- Q faux fur
- imitatiebont
- Kunstfell
- fausse fourrure
- ↑ 30mm
- ⚖ approx. 2000gr/m²

- E > Rug is not fire resistant.
- N > Tapijt is niet vuurvast.
- D > Teppich ist nicht feuerfest.
- F > Tapis non traité anti-feu.



NATIVE 217.001.900

Q wool/viscose - handknotted
wol/viscose - handgeknoopt
Wolle/Viskose - handgeknüpft
laine/viscose - noué à la main

↑ zero pile

⚖ approx. 2900gr/m²





HEXAGON 233.001.990



HEXAGON 233.001.990

- Q wool/viscose - handtufted
wol/viscose - handgetuft
Wolle/Viskose - handgetuftet
laine/viscose - tufté à la main
- ⌈ 12mm
- 👤 approx. 4000gr/m²



CUBE 045.069.990

Q multi-colored wool - crosswoven
meerkleurige wol - dwars geweven
Mehrfarbige Wolle - quergewebt
laine multicolore - tissé à travers

↑ 10mm

⚖ approx. 2700gr/m²



CUBE 045.069.990



BLOOMING 213.001.990



BLOOMING 213.001.990

Q viscose - handtufted
viscose - handgetuft
Viskose - handgetuftet
viscose - tufté à la main

⌈ 10mm

⚖ approx. 4500gr/m²



PATCH 181.003.990

Q wool - handtufted
wol - handgetuft
Wolle - handgetuftet
laine - tufté à la main

⌈ 12mm

⚖ approx. 4250gr/m²





LINWORK 202.001.990



LINEWORK 202.001.990

Q viscose - handwoven
viscose - handgeweven
Viskose - handgewebt
viscose - tissé à la main

± 10mm

👤 approx. 4700gr/m²

- E > Due to the nature of the product joints may be visible.
- N > Door de aard van het product kunnen verbindingen zichtbaar worden.
- D > Bedingt durch tibetanische Webart können Bindungspunkte sichtbar werden.
- F > Certaines lignes verticales peuvent apparaître dans la texture dû au procédé unique du tissage tibétain.



LUCID 184.001.900

Q Tibetan wool - handknotted in Nepal
Tibetaanse wol - handgeknoopt in Nepal
Tibetan Wolle - handgeknüpft in Nepal
laine Tibétaine - noué à la main au Népal

↑ 5mm

⚖ approx. 4000gr/m²





STATIC 204.001.500



STATIC 204.001.500

Q wool - handtufted
wol - handgetuft
Wolle - handgetuftet
laine - tufté à la main

↑ 10mm

⬆ approx. 3500gr/m²



DESERT 199.001.700

Q wool/viscose - handwoven
wol/viscose - handgeweven
Wolle/Viskose - handgewebt
laine/viscose - tissé à la main

↑ 10mm

⚖ approx. 5000gr/m²



DESERT 199.001.700



GRAIN 218.001.910



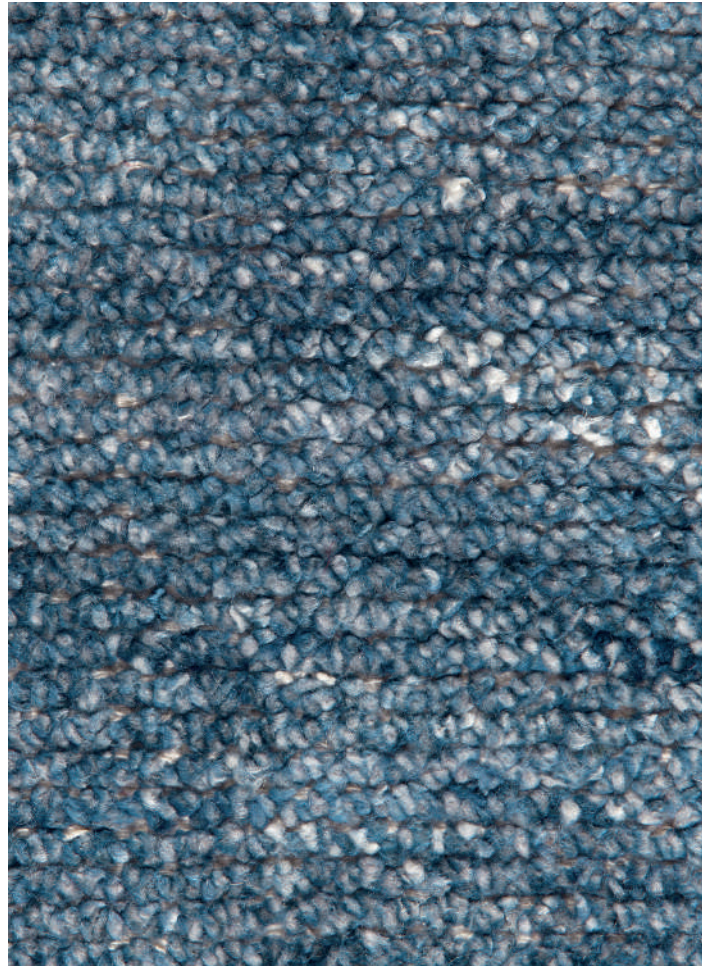
GRAIN 218.001.910

Q handspun viscose - handwoven
handgesponnen viscose - handgeweven
handgesponnen Viskose - handgewebt
viscose filé main - tissé à la main

⌞ zero pile

👤 approx. 2500gr/m²

E > Rug shows natural abrash due to origin of the yarn.
N > Het tapijt toont een natuurlijke abrash door de aard van het garen.
D > Die Herkunft des Garns verleiht dem Teppich seine natürliche Haptik.
F > Le tapis présente des abrases naturels en raison de l'origine du tapis.



GRAIN 218.001.500

Q handspun viscose - handwoven
handgesponnen viscose - handgeweven
handgesponnen Viskose - handgewebt
viscose filé main - tissé à la main

↑ zero pile

⚖ approx. 2500gr/m²

E > Rug shows natural abash due to origin of the yarn.
N > Het tapijt toont een natuurlijke abash door de aard van het garen.
D > Die Herkunft des Garns verleiht dem Teppich seine natürliche Haptik.
F > Le tapis présente des abraches naturels en raison de l'origine du tapis.





GRAIN 218.001.900 + MELLOW 733.002.500 (POUF) + 732.002.500 (CUSHION)



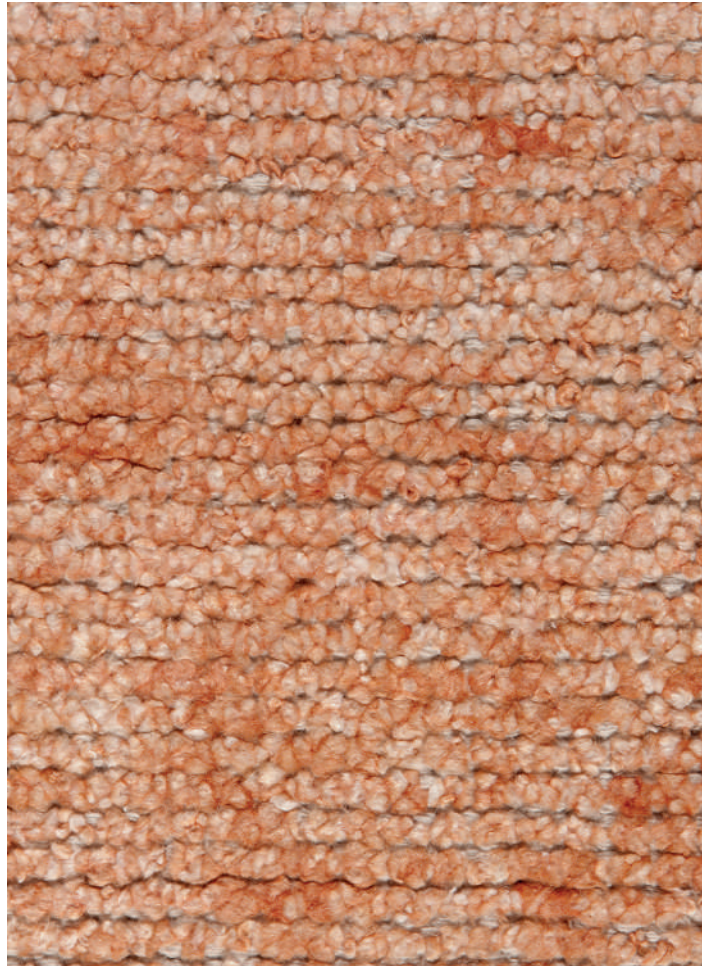
GRAIN 218.001.900

Q handspun viscose - handwoven
handgesponnen viscose - handgeweven
handgesponnen Viskose - handgewebt
viscose filé main - tissé à la main

↑ zero pile

⚖ approx. 2500gr/m²

E > Rug shows natural abrash due to origin of the yarn.
N > Het tapijt toont een natuurlijke abrash door de aard van het garen.
D > Die Herkunft des Garns verleiht dem Teppich seine natürliche Haptik.
F > Le tapis présente des abrases naturels en raison de l'origine du tapis.



GRAIN 218.001.000

Q handspun viscose - handwoven
handgesponnen viscose - handgeweven
handgesponnen Viskose - handgewebt
viscose filé main - tissé à la main

↑ zero pile

⚖ approx. 2500gr/m²

E > Rug shows natural abrash due to origin of the yarn.
N > Het tapijt toont een natuurlijke abrash door de aard van het garen.
D > Die Herkunft des Garns verleiht dem Teppich seine natürliche Haptik.
F > Le tapis présente des abraches naturels en raison de l'origine du tapis.





FRAMEWORK 229.001.100



FRAMEWORK 229.001.100

- Q wool/viscose - handwoven
wol/viscose - handgeweven
Wolle/Viskose - handgewebt
laine/viscose - tissé à la main
- ⌆ flatweave
- 👤 approx. 3500gr/m²



FRAMEWORK 229.001.500

- Q wool/viscose - handwoven
wol/viscose - handgeweven
Wolle/Viskose - handgewebt
laine/viscose - tissé à la main
- ↑ flatweave
- ⚖ approx. 3500gr/m²





FRAMEWORK 229.001.900



FRAMEWORK 229.001.900

- Q wool/viscose - handwoven
wol/viscose - handgeweven
Wolle/Viskose - handgewebt
laine/viscose - tissé à la main
- ↑ flatweave
- ⚖ approx. 3500gr/m²



MERGE 230.001.900

- Q wool/viscose - handwoven
wol/viscose - handgeweven
Wolle/Viskose - handgewebt
laine/viscose - tissé à la main
- ⌞ flatweave
- 👤 approx. 4000gr/m²

- E > Fringes of ± 12 cm on the length of the carpet.
- N > Franjes van ± 12 cm bij de lengte van het tapijt.
- D > Mit ±12 cm langen Fransen auf der langen Seite.
- F > Franges de ± 12 cm sur la longueur du tapis.





MERGE 230.001.920



MERGE 230.001.920

Q wool/viscose - handwoven
wol/viscose - handgeweven
Wolle/Viskose - handgewebt
laine/viscose - tissé à la main

↑ flatweave

⚖ approx. 4000gr/m²

E > Fringes of ± 12 cm on the length of the carpet.
N > Franjes van ± 12 cm bij de lengte van het tapijt.
D > Mit ±12 cm langen Fransen auf der langen Seite.
F > Franges de ± 12 cm sur la longueur du tapis.



PRIMAL 231.001.700

Q wool/viscose - handwoven
wol/viscose - handgeweven
Wolle/Viskose - handgewebt
laine/viscose - tissé à la main

↑ flatweave

⚖ approx. 3000gr/m²

E > Fringes of ± 12 cm on the length of the carpet.
N > Franjes van ± 12 cm bij de lengte van het tapijt.
D > Mit ±12 cm langen Fransen auf der langen Seite.
F > Franges de ± 12 cm sur la longueur du tapis.



PRIMAL 231.001.700



RIPPLE 214.001.900



RIPPLE 214.001.900

Q viscose/wool - handwoven
viscose/wol - handgeweven
Viskose/Wolle - handgewebt
viscose/laine - tissé à la main

↑ 9mm

⬆ approx. 3500gr/m²



RIPPLE 214.001.100



WEDGE 235.001.110

Q viscose - handwoven
viscose - handgeweven
Viskose - handgewebt
viscose - tissé à la main

↑ 6mm

⚖ approx. 3250gr/m²





TRACES 203.001.600



TRACES 203.001.100



TRACES 203.001.600

- Q viscose - handtufted
- viscose - handgetuft
- Viskose - handgetuftet
- viscose - tufté à la main
- ↑ 12mm
- 👤 approx. 5000gr/m²



TRACES 203.001.900

Q viscose - handtufted
viscose - handgetuft
Viskose - handgetuftet
viscose - tufté à la main

↑ 12mm

⚖ approx. 5000gr/m²



TRACES 203.001.900



CURRENT 206.001.510



CURRENT 206.001.510

Q viscose - handwoven
viscose - handgeweven
Viskose - handgewebt
viscose - tissé à la main

± 7mm

⚖ approx. 3750gr/m²



CURRENT 206.001.910

- Q viscose - handwoven
- viscose - handgeweven
- Viskose - handgewebt
- viscose - tissé à la main
- ↑ 7 mm
- ⚖ approx. 3750gr/m²



CURRENT 206.001.900



CURRENT 206.001.910



SHINGLE 206.002.910



SHINGLE 206.002.910

Q viscose - handwoven
viscose - handgeweven
Viskose - handgewebt
viscose - tissé à la main

± 7mm

⚖ approx. 3750gr/m²



SHINGLE 206.002.900

Q viscose - handwoven
viscose - handgeweven
Viskose - handgewebt
viscose - tissé à la main

↑ 7mm

⚖ approx. 3750gr/m²



SHINGLE 206.002.900



GRID 206.003.900



GRID 206.003.900

Q viscose - handwoven
viscose - handgeweven
Viskose - handgewebt
viscose - tissé à la main

↑ 7mm

⚖ approx. 3750gr/m²



FOLD 111.001.601

Q wool/viscose - handknotted
wol/viscose - handgeknoopt
Wolle/Viskose - handgeknüpft
laine/viscose - noué à la main

⏏ 6 mm

👤 approx. 3500gr/m²





DUNE 192.001.600



DUNE 192.001.600

Q wool Indo-Nepalese/hemp - handknotted
Indo-Nepalese wol/hennep - handgeknoopt
Indo-Nepalese Wolle/Hanf - handgeknüpft
laine indo-népalaise/chanvre - noué à la main

↑ high low

⚖ approx. 3000gr/m²

- E > Due to the nature of the product joints may be visible.
- N > Door de aard van het product kunnen verbindingen zichtbaar worden.
- D > Bedingt durch tibetanische Webart können Bindungspunkte sichtbar werden.
- F > Certaines lignes verticales peuvent apparaître dans la texture dû au procédé unique du tissage tibétain.



DUNE 192.001.100

Q wool Indo-Nepalese/hemp - handknotted
Indo-Nepalese wol/hennep - handgeknoopt
Indo-Nepalese Wolle/Hanf - handgeknüpft
laine indo-népalaise/chanvre - noué à la main

↑ high low

⚖ approx. 3000gr/m²

E > Due to the nature of the product joints may be visible.
N > Door de aard van het product kunnen verbindingen zichtbaar worden.
D > Bedingt durch tibetanische Webart können Bindungspunkte sichtbar werden.
F > Certaines lignes verticales peuvent apparaître dans la texture dû au procédé unique du tissage tibétain.



DUNE 192.001.100



ADORE 207.001.100



ADORE 207.001.100

Q polyester - handwoven
polyester - handgeweven
Polyester - handgewebt
polyester - tissé à la main

↑ 75mm

⚖ approx. 6250gr/m²



ADORE 207.001.500

Q polyester - handwoven
polyester - handgeweven
Polyester - handgewebt
polyester - tissé à la main

↑ 75mm

⚖ approx. 6250gr/m²



ADORE 207.001.500



ADORE 207.001.900



ADORE 207.001.610

- Q polyester - handwoven
- polyester - handgeweven
- Polyester - handgewebt
- polyester - tissé à la main
- ↑ 75mm
- 👤 approx. 6250gr/m²



ADORE 207.001.900



ADORE 207.001.920

Q polyester - handwoven
polyester - handgeweven
Polyester - handgewebt
polyester - tissé à la main

⌈ 75mm

👤 approx. 6250gr/m²



ADORE 207.001.920



ADORE 207.001.950



ADORE 207.001.950

Q polyester - handwoven
polyester - handgeweven
Polyester - handgewebt
polyester - tissé à la main

H 75mm

A approx. 6250gr/m²

MELLOW



733.003.900

cm 60x60x20
in 2'x2'x0'8



731.001.900

cm 60x60x45
in 2'x2'x1'6"



734.001.900

cm 60x60x60
in 2'x2'x2'



732.002.700

cm 45x45
in 1'6"x1'6"



732.001.970

cm 45x45
in 1'6"x1'6"



733.002.500

cm 60x60x20
in 2'x2'x0'8



731.001.500

cm 60x60x45
in 2'x2'x1'6"



734.001.500

cm 60x60x60
in 2'x2'x2'



732.002.500

cm 45x45
in 1'6"x1'6"



732.001.950

cm 45x45
in 1'6"x1'6"



733.001.940

cm 60x60x20
in 2'x2'x0'8



731.001.400

cm 60x60x45
in 2'x2'x1'6"



734.001.400

cm 60x60x60
in 2'x2'x2'



732.002.400

cm 45x45
in 1'6"x1'6"



732.001.940

cm 45x45
in 1'6"x1'6"



733.003.800

cm 60x60x20
in 2'x2'x0'8



731.001.800

cm 60x60x45
in 2'x2'x1'6"



734.001.800

cm 60x60x60
in 2'x2'x2'



732.002.800

cm 45x45
in 1'6"x1'6"



732.001.980

cm 45x45
in 1'6"x1'6"

p. 4 NEW

Q pouf: cotton/cotton filling

Q cushion: cotton

↑ flatweave

▲ pouf small: approx. 5445gr/st.

▲ pouf medium: approx. 10935gr/st.

▲ pouf large: approx. 19000gr/st.

▲ cushion: approx. 900gr/st.

p. 4 NEW

Q pouf: cotton/cotton filling

Q cushion: cotton

↑ flatweave

▲ pouf small: approx. 5445gr/st.

▲ pouf medium: approx. 10935gr/st.

▲ pouf large: approx. 19000gr/st.

▲ cushion: approx. 900gr/st.

p. 4 NEW

Q pouf: cotton/cotton filling

Q cushion: cotton

↑ flatweave

▲ pouf small: approx. 5445gr/st.

▲ pouf medium: approx. 10935gr/st.

▲ pouf large: approx. 19000gr/st.

▲ cushion: approx. 900gr/st.

p. 4 NEW

Q pouf: cotton/cotton filling

Q cushion: cotton

↑ flatweave

▲ pouf small: approx. 5445gr/st.

▲ pouf medium: approx. 10935gr/st.

▲ pouf large: approx. 19000gr/st.

▲ cushion: approx. 900gr/st.

LUSH



730 001 100

cm 60x100
in 2'x3'3"



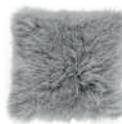
729 001 100

cm 45x45
in 1'6"x1'6"



730 001 900

cm 60x100
in 2'x3'3"



729 001 900

cm 45x45
in 1'6"x1'6"



730 001 910

cm 60x100
in 2'x3'3"



729 001 910

cm 45x45
in 1'6"x1'6"

p. 18

Q Mongolian lambskin

↑ 100mm

▲ skin: approx. 450gr/st.

▲ cushion: approx. 650gr/st.

p. 20

Q Mongolian lambskin

↑ 100mm

▲ skin: approx. 450gr/st.

▲ cushion: approx. 650gr/st.

p. 22

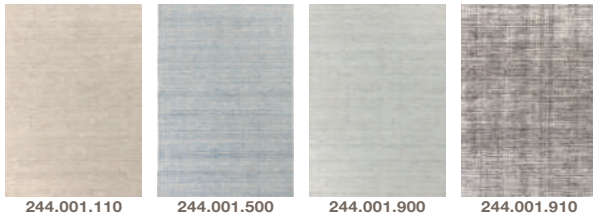
Q Mongolian lambskin

↑ 100mm

▲ skin: approx. 450gr/st.

▲ cushion: approx. 650gr/st.

OAT



p. 24-31 NEW

Q wool/bamboo silk - handwoven

↑ zero pile

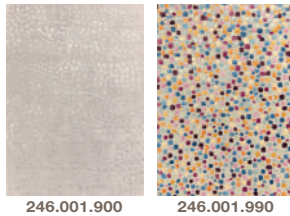
⚖ approx. 3500gr/m²

cm 140x200-170x240-200x300-250x350

in 4'7"x6'7"-5'7"x7'10"-6'7"x9'10"-8'2"x11'6"

! 244.001.500 also 60x120 / 2'x3'11"

DOTTED



p. 32-35 NEW

Q wool/viscose - handtufted

↑ high low

⚖ approx. 5000gr/m²

cm 60x120-140x200-170x240-200x300-250x350

in 2'x3'11"-4'7"x6'7"-5'7"x7'10"-6'7"x9'10"-8'2"x11'6"

PRIME



p. 36 NEW

Q wool - Moroccan knotted

↑ 20mm

⚖ approx. 4500gr/m²

cm 60x120-140x200-170x240-200x300-250x350

in 2'x3'11"-4'7"x6'7"-5'7"x7'10"-6'7"x9'10"-8'2"x11'6"

TORRENT



p. 38 NEW

Q wool/tencel - handwoven

↑ 3mm

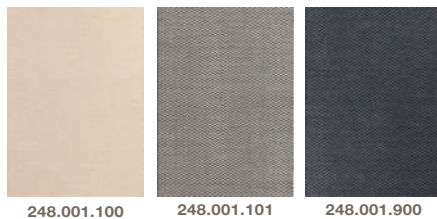
⚖ approx. 3000gr/m²

cm 60x120-140x200-170x240-200x300-250x350

in 2'x3'11"-4'7"x6'7"-5'7"x7'10"-6'7"x9'10"-8'2"x11'6"

! Fringes of ± 4 cm on the length of the carpet.

RHYTHM



p. 40-45 NEW

Q wool/viscose - handwoven

↑ flatweave

⚖ approx. 2700gr/m²

cm 60x120-140x200-170x240-200x300-250x350

in 2'x3'11"-4'7"x6'7"-5'7"x7'10"-6'7"x9'10"-8'2"x11'6"

GRADE



p. 46

Q wool/viscose - handwoven

↑ flatweave

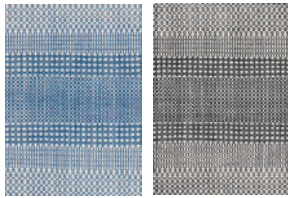
⚖ approx. 3500gr/m²

cm 60x120-140x200-170x240-200x300-250x350

in 2'x3'11"-4'7"x6'7"-5'7"x7'10"-6'7"x9'10"-8'2"x11'6"

! Fringes of ± 2,5 cm on the length of the carpet.

SWITCH



237.001.500

237.001.900

p. 48-51

Q wool - handknotted

↑ structured

⚖ approx. 2100gr/m²

cm 60x120-140x200-170x240-200x300-250x350

in 2'x3'11"-4'7"x6'7"-5'7"x7'10"-6'7"x9'10"-8'2"x11'6"

MARVEL



240.001.505

240.001.609

240.001.707

240.001.909

240.001.919

p. 52-59 NEW

Q wool - handwoven

↑ flatweave

⚖ approx. 2000gr/m²

cm 140x200-170x240-200x300-250x350

in 4'7"x6'7"-5'7"x7'10"-6'7"x9'10"-8'2"x11'6"

! 240.001.909 also 60x120 / 2'x3'11"

SOLID



243.001.900

p. 60

Q wool - handwoven

↑ flatweave

⚖ approx. 4000gr/m²

cm 60x120-140x200-170x240-200x300-250x350

in 2'x3'11"-4'7"x6'7"-5'7"x7'10"-6'7"x9'10"-8'2"x11'6"

SHIFT



242.001.100 ●

p. 62

Q wool - handwoven

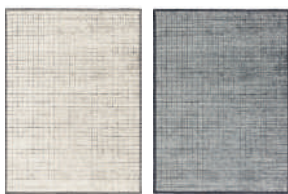
↑ flatweave

⚖ approx. 2000gr/m²

cm 60x120-140x200-170x240-200x300-250x350

in 2'x3'11"-4'7"x6'7"-5'7"x7'10"-6'7"x9'10"-8'2"x11'6"

MESH



239.001.100

239.001.900

p. 64

Q viscose/wool - handwoven

↑ 4mm

⚖ approx. 3250gr/m²

cm 170x240-200x300-250x350

in 5'7"x7'10"-6'7"x9'10"-8'2"x11'6"

! 239.001.900 also 60x120 / 2'x3'11"

ERODE



238.001.500

238.001.600

p. 66-69

Q wool/handspun viscose - handtufted

↑ high low

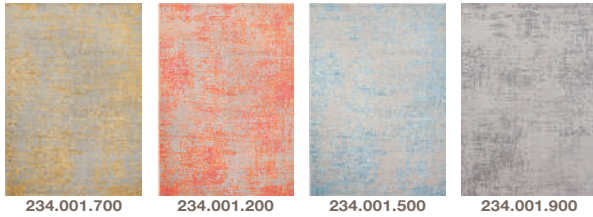
⚖ approx. 3800gr/m²

cm 140x200-170x240-200x300-250x350

in 4'7"x6'7"-5'7"x7'10"-6'7"x9'10"-8'2"x11'6"

! 238.001.600 also 60x120 / 2'x3'11"

REFLECT



234.001.700

234.001.200

234.001.500

234.001.900

p. 70-77

Q wool/viscose - handknotted

↑ zero pile

⚖ approx. 2900gr/m²

cm 140x200-170x240-200x300-250x350

in 4'7"x6'7"-5'7"x7'10"-6'7"x9'10"-8'2"x11'6"

! 234.001.200 also 60x120 / 2'x3'11"

ENJOY



216.001.200 ●



700.001.200 ●

cm 50x50
in 20"x20"



216.001.600 ●



700.001.600 ●

cm 50x50
in 20"x20"



216.001.990



700.001.990 ●

cm 50x50
in 20"x20"

p. 78

Q wool - handwoven

↑ flatweave

⚖ approx. 1400gr/m²

cm 140x200-170x240-200x300

in 4'7"x6'7"-5'7"x7'10"-6'7"x9'10"

p. 80

Q wool - handwoven

↑ flatweave

⚖ approx. 1400gr/m²

cm 140x200-170x240-200x300

in 4'7"x6'7"-5'7"x7'10"-6'7"x9'10"

p. 82

Q wool - handwoven

↑ flatweave

⚖ approx. 1400gr/m²

cm 60x120-140x200-170x240-200x300

in 2'x3'11"-4'7"x6'7"-5'7"x7'10"-6'7"x9'10"

RISE



216.002.300 ●

216.002.500 ●

216.002.600 ●

p. 79-83

Q wool - handwoven

↑ flatweave

⚖ approx. 1400gr/m²

cm 170x240-200x300

in 4'7"x6'7"-5'7"x7'10"-6'7"x9'10"

! 216.002.300 also 60x120 / 2'x3'11"

SAND



219.001.100 ●

p. 84

Q jute/cotton - handwoven

↑ flatweave

⚖ approx. 2500gr/m²

cm 60x120-140x200-170x240-200x300-250x350

in 2'x3'11"-4'7"x6'7"-5'7"x7'10"-6'7"x9'10"-8'2"x11'6"

FEEL



223.001.900



704.001.900



703.001.900



712.001.900



211.001.600



705.001.600



706.001.600



707.001.600



211.003.100



708.001.100



709.001.100



710.001.100

p. 86

Q faux fur

↑ 30mm

▲ approx. 2200gr/m²

cm 64x120-128x200-160x240-192x300-255x350

in 2'1"x3'11"-4'2"x6'7"-5'3"x7'10"-6'3"x9'10"-8'3"x11'6"

PLAID

cm 140x200

in 4'6"x6'7"

CUSHION

cm 50x50-70x70

in 20"x20"-28"x28"

p. 88

Q faux fur

↑ 20mm

▲ approx. 1600gr/m²

cm 120x200-160x240-200x300-240x350

in 3'11"x6'7"-5'3"x7'10"-6'7"x9'10"-7'10"x11'6"

PLAID

cm 140x200

in 4'6"x6'7"

CUSHION

cm 50x50-70x70

in 20"x20"-28"x28"

p. 90

Q faux fur

↑ 30mm

▲ approx. 2000gr/m²

cm 64x120-128x200-160x240-192x300-255x350

in 2'1"x3'11"-4'2"x6'7"-5'3"x7'10"-6'3"x9'10"-8'3"x11'6"

PLAID

cm 140x200

in 4'6"x6'7"

CUSHION

cm 50x50-70x70

in 20"x20"-28"x28"

NATIVE



217.001.900

p. 92

Q wool/viscose - handknotted

↑ zero pile

▲ approx. 2900gr/m²

cm 60x120-140x200-170x240-200x300-250x350

in 2'x3'11"-4'7"x6'7"-5'7"x7'10"-6'7"x9'10"-8'2"x11'6"

HEXAGON



233.001.990

p. 94

Q wool/viscose - handtufted

↑ 12mm

▲ approx. 4000gr/m²

cm 140x200-170x240-200x300-250x350

in 4'7"x6'7"-5'7"x7'10"-6'7"x9'10"-8'2"x11'6"

CUBE



045.069.990

p. 96

Q multi/colored wool - crosswoven

⌈ 10mm

⚖ approx. 2700gr/m²

cm 140x195-170x235-200x295-250x345-300x395
in 4'7"x6'5"-5'7"x7'8"-6'7"x9'8"-8'2"x11'4"-9'8"x12'9"

BLOOMING



213.001.990 ●



213.001.990 ●

p. 98

Q viscose - handtufted

⌈ 10mm

⚖ approx. 4500gr/m²

∅230 cm - 7'7" in

cm 60x120-140x200-170x240-200x300-250x350
in 2'x3'11"-4'7"x6'7"-5'7"x7'10"-6'7"x9'10"-8'2"x11'6"

PATCH



181.003.990

p. 100

Q wool - handtufted

⌈ 12mm

⚖ approx. 4250gr/m²

cm 60x120-140x200-170x240-200x300-250x350
in 2'x3'11"-4'7"x6'7"-5'7"x7'10"-6'7"x9'10"-8'2"x11'6"

LINEWORK



202.001.990

p. 102

Q viscose - handwoven

⌈ 10mm

⚖ approx. 4700gr/m²

cm 60x120-140x200-170x240-200x300-250x350
in 2'x3'11"-4'7"x6'7"-5'7"x7'10"-6'7"x9'10"-8'2"x11'6"

LUCID



184.001.900 ●

p. 104

Q Tibetan wool - handknotted in Nepal

⌈ 5mm

⚖ approx. 4000gr/m²

cm 60x120-140x200-170x240-200x300-250x350
in 2'x3'11"-4'7"x6'7"-5'7"x7'10"-6'7"x9'10"-8'2"x11'6"

STATIC



204.001.500

p. 106

Q wool - handtufted

⌈ 10mm

⚖ approx. 3500gr/m²

cm 60x120-140x200-170x240-200x300-250x350
in 2'x3'11"-4'7"x6'7"-5'7"x7'10"-6'7"x9'10"-8'2"x11'6"

DESERT



199.001.700

p. 108

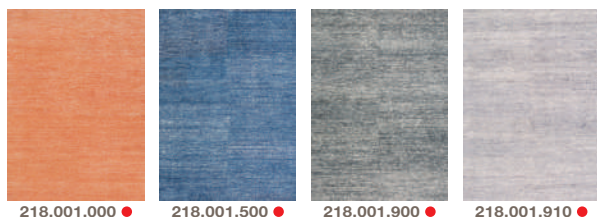
Q wool/viscose - handwoven

⌈ 10mm

⚖ approx. 5000gr/m²

cm 140x200-170x240-200x300-250x350
in 4'7"x6'7"-5'7"x7'10"-6'7"x9'10"-8'2"x11'6"

GRAIN



218.001.000 ●

218.001.500 ●

218.001.900 ●

218.001.910 ●

p. 110-117

Q handspun viscose - handwoven

↑ zero pile

⚖ approx. 2500gr/m²

cm 140x200-170x240-200x300

in 4'7"x6'7"-5'7"x7'10"-6'7"x9'10"

! 218.001.900 also 60x120 / 2'x3'11"

FRAMEWORK



229.001.100

229.001.500 ●

229.001.900

p. 118-123

Q wool/viscose - handwoven

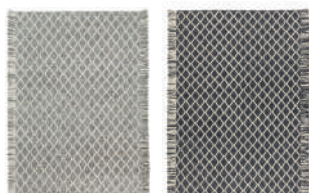
↑ flatweave

⚖ approx. 3000gr/m²

cm 60x120-140x200-170x240-200x300-250x350

in 2'x3'11"-4'7"x6'7"-5'7"x7'10"-6'7"x9'10"-8'2"x11'6"

MERGE



230.001.900

230.001.920

p. 124-127

Q wool/viscose - handwoven

↑ flatweave

⚖ approx. 4000gr/m²

cm 60x120-140x200-170x240-200x300-250x350

in 2'x3'11"-4'7"x6'7"-5'7"x7'10"-6'7"x9'10"-8'2"x11'6"

! Fringes of ± 12 cm on the length of the carpet.

PRIMAL



231.001.700

p. 128

Q wool/viscose - handwoven

↑ flatweave

⚖ approx. 3000gr/m²

cm 60x120-140x200-170x240-200x300-250x350

in 2'x3'11"-4'7"x6'7"-5'7"x7'10"-6'7"x9'10"-8'2"x11'6"

! Fringes of ± 12 cm on the length of the carpet.

RIPPLE



214.001.100

214.001.900

p. 130

Q viscose/wool - handwoven

↑ 9mm

⚖ approx. 3500gr/m²

cm 170x240-200x300-250x350

in 5'7"x7'10"-6'7"x9'10"-8'2"x11'6"

! 214.001.900 also 60x120 / 2'x3'11"

WEDGE



235.001.110

p. 132

Q viscose - handwoven

↑ 6mm

⚖ approx. 3250gr/m²

cm 60x120-140x200-170x240-200x300-250x350

in 2'x3'11"-4'7"x6'7"-5'7"x7'10"-6'7"x9'10"-8'2"x11'6"

TRACES



203.001.100

203.001.600

203.001.900

p. 134-139

Q viscose - handtufted

↑ 12mm

⚖ approx. 5000gr/m²

cm 60x120-140x200-170x240-200x300-250x350

in 2'x3'11"-4'7"x6'7"-5'7"x7'10"-6'7"x9'10"-8'2"x11'6"

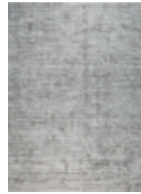
CURRENT



206.001.510



206.001.900



206.001.910

p. 140-141

Q viscose - handwoven

↑ 7mm

▲ approx. 3750gr/m²

cm 170x240-200x300-250x350

in 5'7"x7'10"-6'7"x9'10"-8'2"x11'6"

SHINGLE



206.002.900



206.002.910

p. 142

Q viscose - handwoven

↑ 7mm

▲ approx. 3750gr/m²

cm 170x240-200x300-250x350

in 5'7"x7'10"-6'7"x9'10"-8'2"x11'6"

! 206.002.910 also 60x120 / 2'x3'11"

GRID



206.003.900

p. 146

Q viscose - handwoven

↑ 7mm

▲ approx. 3750gr/m²

cm 170x240-200x300-250x350

in 5'7"x7'10"-6'7"x9'10"-8'2"x11'6"

FOLD



111.001.601 ●

p. 148

Q wool/viscose - handknotted

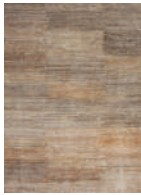
↑ 6mm

▲ approx. 3500gr/m²

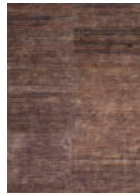
cm 140x200-170x240-200x300

in 4'7"x6'7"-5'7"x7'10"-6'7"x9'10"

DUNE



192.001.100



192.001.600 ●

p. 150-153

Q wool/hemp Indo-Nepalese - handknotted

↑ high low

▲ approx. 3000gr/m²

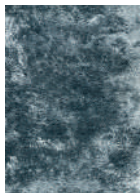
cm 60x120-140x200-170x240-200x300-250x350

in 2'x3'11"-4'7"x6'7"-5'7"x7'10"-6'7"x9'10"-8'2"x11'6"

ADORE



207.001.100



207.001.500



207.001.610



207.001.900

p. 154-163

Q polyester - handwoven

↑ 75mm

▲ approx. 6250gr/m²

cm 60x120-140x200-170x240-200x300-250x350

in 2'x3'11"-4'7"x6'7"-5'7"x7'10"-6'7"x9'10"-8'2"x11'6"



207.001.920



207.001.950

● Please consult stocklist.



REFERENCES

name	reference	p.
CUBE	045.069.990	96
FOLD	111.001.601 ●	148
PATCH	181.003.990	100
LUCID	184.001.900 ●	104
DUNE	192.001.100	152
DUNE	192.001.600 ●	150
DESERT	199.001.700	108
LINEWORK	202.001.990	102
TRACES	203.001.100	135
TRACES	203.001.600	134
TRACES	203.001.900	136
STATIC	204.001.500	106
CURRENT	206.001.510	138
CURRENT	206.001.900	140
CURRENT	206.001.910	141
SHINGLE	206.002.900	144
SHINGLE	206.002.910	142
GRID	206.003.900	146
ADORE	207.001.100	154
ADORE	207.001.500	156
ADORE	207.001.610	159
ADORE	207.001.900	158
ADORE	207.001.920	160
ADORE	207.001.950	162
FEEL	211.001.600	89
FEEL	211.003.100	90
BLOOMING	213.001.990 ●	98
RIPPLE	214.001.100	131
RIPPLE	214.001.900	130
ENJOY	216.001.200 ●	78
ENJOY	216.001.600 ●	80
ENJOY	216.001.990	82
RISE	216.002.300 ●	82
RISE	216.002.500 ●	79
RISE	216.002.600 ●	80
NATIVE	217.001.900	92
GRAIN	218.001.000 ●	116
GRAIN	218.001.500 ●	112
GRAIN	218.001.900 ●	114

name	reference	p.
GRAIN	218.001.910 ●	110
SAND	219.001.100 ●	84
FEEL	223.001.900	86
FRAMEWORK	229.001.100	118
FRAMEWORK	229.001.500 ●	120
FRAMEWORK	229.001.900	122
MERGE	230.001.900	124
MERGE	230.001.920	126
PRIMAL	231.001.700	128
HEXAGON	233.001.990	94
REFLECT	234.001.200	76
REFLECT	234.001.500	74
REFLECT	234.001.700	70
REFLECT	234.001.900	72
WEDGE	235.001.110	132
SWITCH	237.001.500	48
SWITCH	237.001.900	50
ERODE	238.001.500	66
ERODE	238.001.600	68
MESH	239.001.100	64
MESH	239.001.900	64
MARVEL	240.001.505	56
MARVEL	240.001.609	52
MARVEL	240.001.707	54
MARVEL	240.001.909	56
MARVEL	240.001.919	58
GRADE	241.001.900	46
SHIFT	242.001.100 ●	62
SOLID	243.001.900	60
OAT	244.001.110	26
OAT	244.001.500	28
OAT	244.001.900	24
OAT	244.001.910	30
PRIME	245.001.100	36
DOTTED	246.001.900	32
DOTTED	246.001.910	34
TORRENT	247.001.500	38
RHYTHM	248.001.100	42
RHYTHM	248.001.101	44

name	reference	p.
RHYTHM	248.001.900	40
ENJOY	700.001.200 ●	78
ENJOY	700.001.600 ●	167
ENJOY	700.001.990 ●	82
FEEL	703.001.900	87
FEEL	704.001.900	86
FEEL	705.001.600	89
FEEL	706.001.600	88
FEEL	707.001.600	168
FEEL	708.001.100	168
FEEL	709.001.100	90
FEEL	710.001.100	168
FEEL	712.001.900	168
LUSH	729.001.100	18
LUSH	729.001.900	21
LUSH	729.001.910	22
LUSH	730.001.100	18
LUSH	730.001.900	21
LUSH	730.001.910	22
MELLOW	731.001.400	14
MELLOW	731.001.500	13
MELLOW	731.001.800	17
MELLOW	731.001.900	10
MELLOW	732.001.940	14
MELLOW	732.001.950	13
MELLOW	732.001.970	10
MELLOW	732.001.980	17
MELLOW	732.002.400	14
MELLOW	732.002.500	13
MELLOW	732.002.700	10
MELLOW	732.002.800	17
MELLOW	733.001.940	14
MELLOW	733.002.500	13
MELLOW	733.003.800	17
MELLOW	733.003.900	10
MELLOW	734.001.400	164
MELLOW	734.001.500	7
MELLOW	734.001.800	7
MELLOW	734.001.900	6

● Please consult stocklist.

CONTACT OUR TEAM

Luc Claeys - General manager - luc.claeys@lignepure.com

Luc Dejager - Sales director America - luc.dejager@lignepure.com

Maghalie Dooms - Head of design and marketing - maghalie.dooms@lignepure.com

Astrid Staes - Sales assistant - astrid.staes@lignepure.com

CLEANING & MARKETING TOOLS

Dry cleaning recommended - Nettoyage à sec recommandé

Droogkuis aanbevolen - Trockenreinigung empfohlen

For more information please visit www.lignepure.com and www.james.eu.

CHARITY

The NGO "Project Mala" was founded in 1989 as an action program for the abolition of child labor in the carpet industry in India. Project Mala reaches out to children in the carpet belt of Uttar Pradesh and provides them education, nutritional meals, healthcare services, school supplies, clothing and exposure to a wide range of cultural activities and sports. Project Mala has already enrolled over 7.500 children from 45 rural villages throughout the Uttar Pradesh region. Ligne Pure is delighted to sponsor this wonderful and well organized project and give back to the children living in the carpet area of North India.

For additional information please visit www.projectmala.org.



LIGNE PURE
Evolis 119 - B-8530 Harelbeke
T. +32(0)56 777 000 - F. +32(0)56 775 278
info@lignepure.com - lignepure.com



© The rug creations in this catalogue are legally registered. The pictures shown are copyright Osta nv, Ligne Pure nv. Reproduction of these creations or use of the pictures without our written consent is strictly forbidden and will lead to legal prosecution. Readers declare having taken notice of above and to abstain from illegal use.



LIGNÉ PURE

Evolis 119 - 8530 Harelbeke - België
T. +32(0)56 777 000 - F. +32(0)56 775 278
info@lignepure.com - lignepure.com